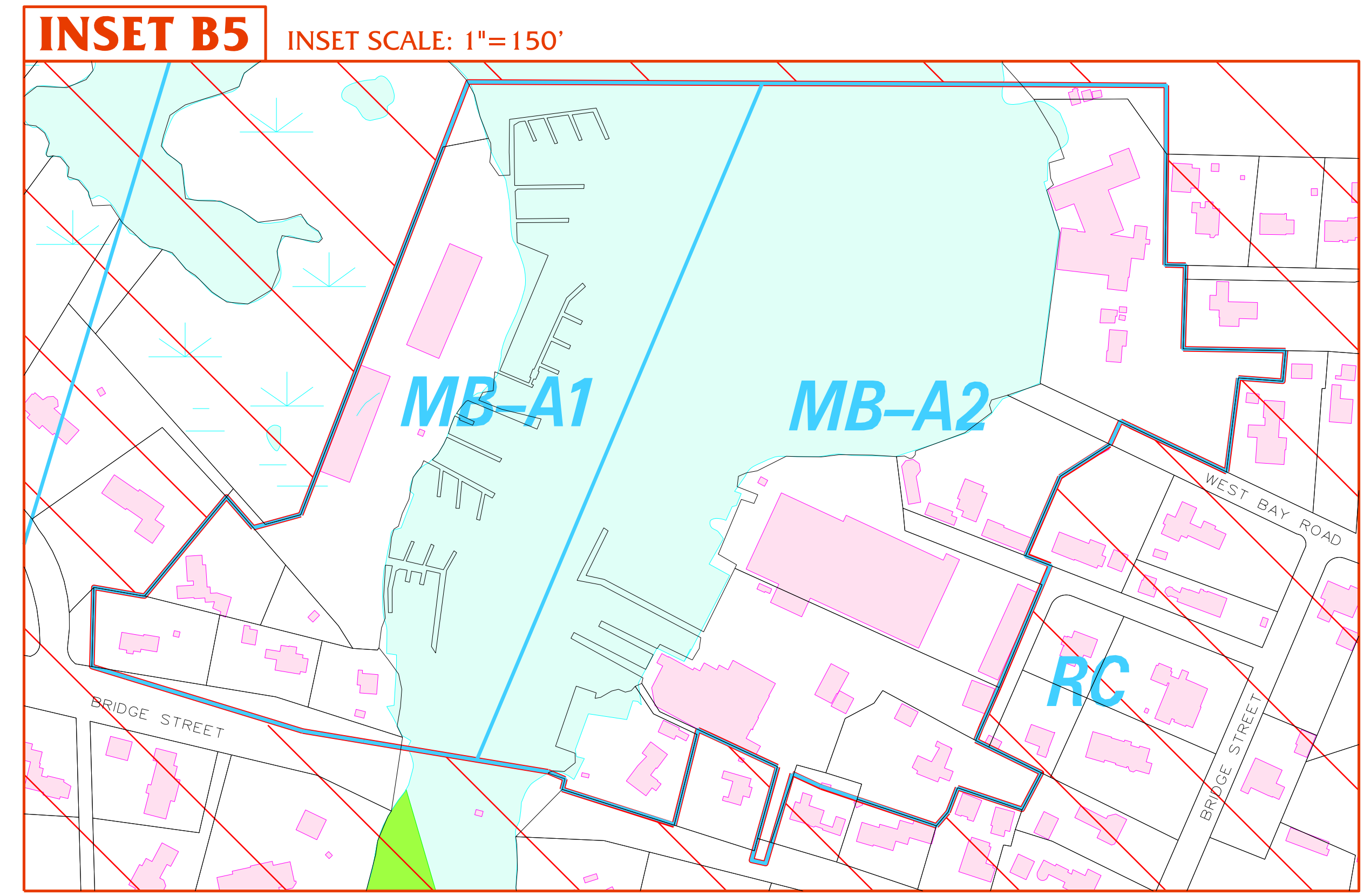
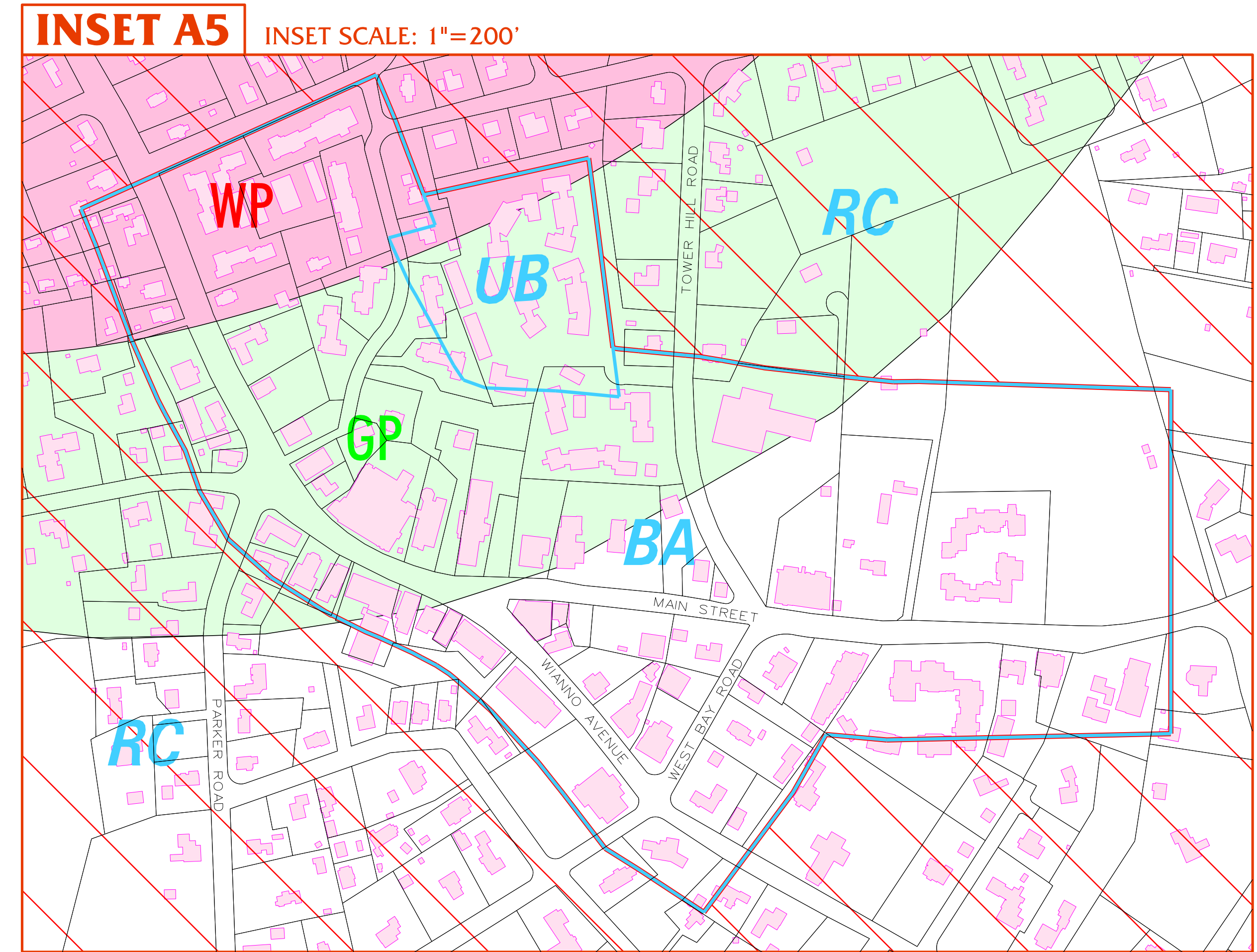
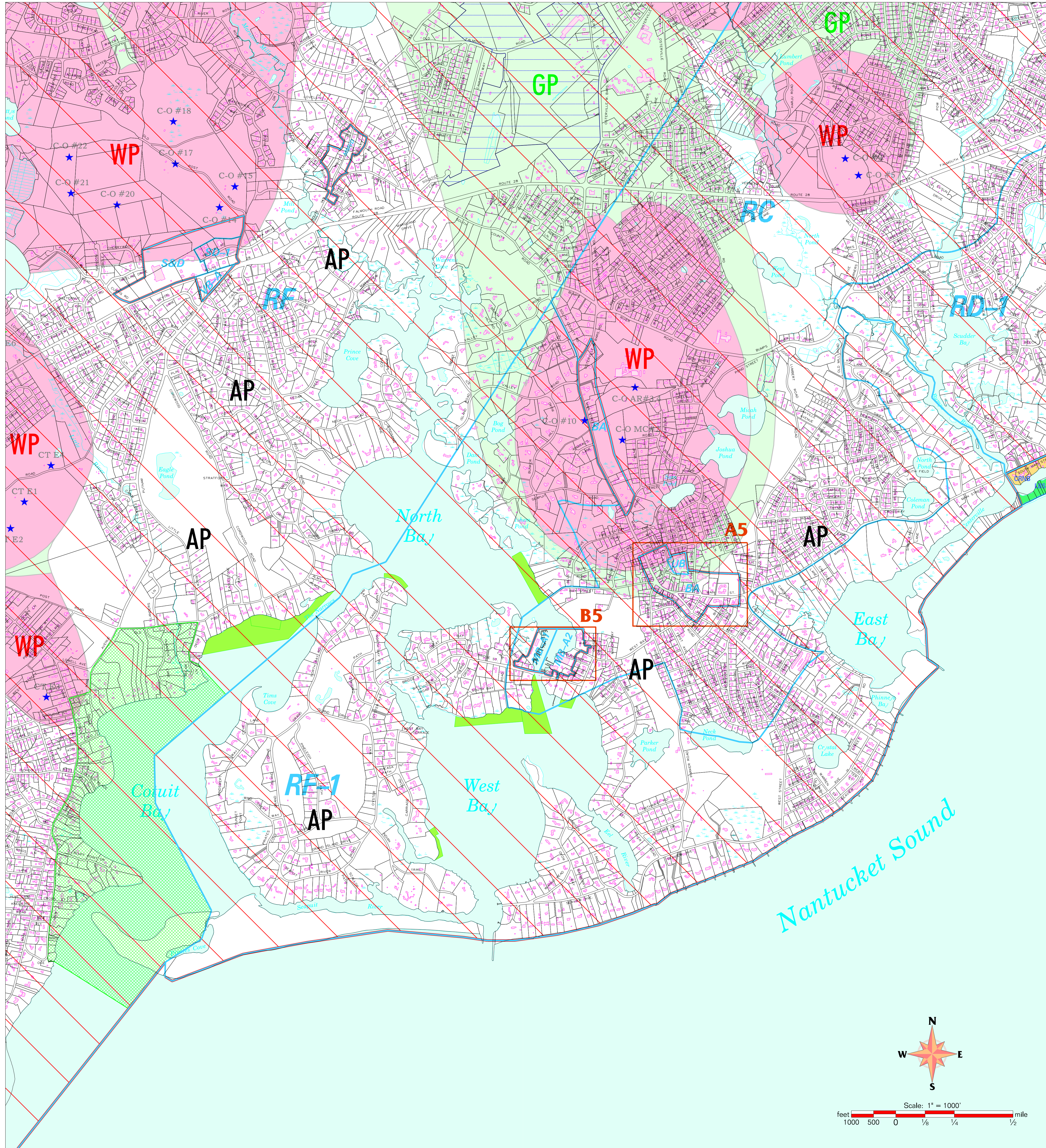


# ZONING MAP of the TOWN OF BARNSTABLE, MASSACHUSETTS

LAST AMENDED FEBRUARY 28, 2019

# OSTERVILLE - SHEET 5 OF 7



Map Legend			
	Zoning District		Existing Public Well Site
	Wellhead Protection Overlay District		Proven Future Public Well Site
	Groundwater Protection Overlay District		Proposed Future Public Well Site
	Apur Protection Overlay District		Parcel Lines (FY 2019)
	Adult Use Overlay District		Buildings
	Dock and Pier Overlay District		Railroad Track
	Former Grade 5 School Planned Unit Development Overlay District		Town Boundary Line
	Medical Services Overlay District		Marsh Area
	Resource Protection Overlay District		Stream / Edge of Water
	Shopping Center Redevelopment Overlay District		Cranberry Bog
	Senior Continuing Care Retirement Community - SCRCOD 2008-1		
	Recreational Shellfish Area and Shellfish Relay Area Dock & Pier Overlay District		
	Ground Mounted Solar Photovoltaic Overlay District		
	Craigville Village Neighborhood Overlay		
	Long / Short Beach Neighborhood Overlay		
	Craigville Beach Neighborhood Overlay		
	Centerville River North Bank Neighborhood Overlay		

SEE TEXT OF ZONING ORDINANCE FOR COMPLETE INFORMATION ON BULK REGULATIONS.

Where a zoning district boundary is located at the edge of a water body, that zone that applies to the land shall apply to structures and uses such as piers and commercial boating operations to the extent of the territorial jurisdiction of the town.

Where zoning district boundaries are located along the edge of a roadway and a distance is shown from such point to another zoning boundary, such distance and points shall be from the edge of the road layout. The ultimate location of such point shall be determined by survey as the line shown on this map is considered an approximation.

